

ANNUAL REPORT



CRAWFORD COUNTY CORONER

2023

Table of Contents

Message from Coroner	3
Coroner Staff	4
2023 Accomplishments	5
Community Events	6
2023 Revenue	7
2023 Expense Total	8
Reportable Deaths by Type	9
Coroner Case Totals	10
Death by Manner and Age	11 - 13

Contact Information

CrawfordMoCoroner.com
email: admin@crawfordmocoroner.com

Phone: 573-775-4250

PO Box U
Cuba, Mo. 65453

Message to the Citizens of Crawford County

The Crawford County Coroner's Office investigates sudden, violent, unexpected, and suspicious deaths that occur in Crawford County. The office of the Coroner certifies death after investigation and postmortem examination and issues the death certificate as required by law. Complete findings of the death investigation are distributed to families and law enforcement agencies as appropriate.

The main duties of the Office of the Coroner are to determine the cause and manner of death, and certify deaths that are reported to the Coroner. The cause of death is the disease process or injury that resulted in death. There are thousands of diseases and injuries that may result in death. The manner of death is a classification in which a determination is made regarding whether the death resulted from natural causes, homicide, suicide, or an accident. On occasion, the manner of death is classified as indeterminate.

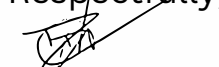
Information collected during the investigation helps clarify the circumstances, such as the sequence of events prior to death. Evidence collected during an investigation and/or postmortem examination may help lead to the arrest or successful conviction of a suspect in a homicide case. Because deaths occur around the clock, Coroner Investigation staff are available 24 hours a day, 365 days per year.

With the skill and experience of the Coroner investigators and board-certified forensic pathologists, we believe the quality of death investigations in Crawford County are among the best in the State. The death scene investigation reports filed by the investigators are very thorough and supply comprehensive information to the Coroner and Pathologist.

Our Coroner and investigators also extend their duties to the living by answering questions and addressing concerns regarding deaths within the county. Coroner investigators frequently make personal contact with family members of a deceased and assist them by providing appropriate answers regarding the circumstances of the death. Investigators are supplied with a pamphlet for distribution to families. The information provides answers to common questions and facts about autopsies and also provides resource information pertaining to grief counseling.

We extend our sincere gratitude to the Crawford County Board of Commissioners for their support of the Coroner's office and the services we provide to the citizens of Crawford County.

Respectfully,



Darren Dake
Coroner

CORONER OFFICE STAFF



DARREN DAKE

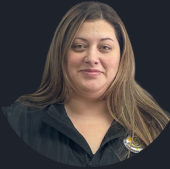
Coroner



HILLARY CAMPBELL

ADMIN ASSISTANT

INVESTIGATORS



AMBER SCOTT

Chief Deputy



BEN WEBER

Deputy Coroner



UNFILLED

Deputy Coroner

SUPPORT TEAM



MALISA TODDY



HUNTER PHILLIPS



TODD HOLMAN



**ALEAH
SCHARFENBERG**

ACCOMPLISHMENTS

2023



Family Support Team
(Volunteer Team)



Transport Van
From Restitution Fund

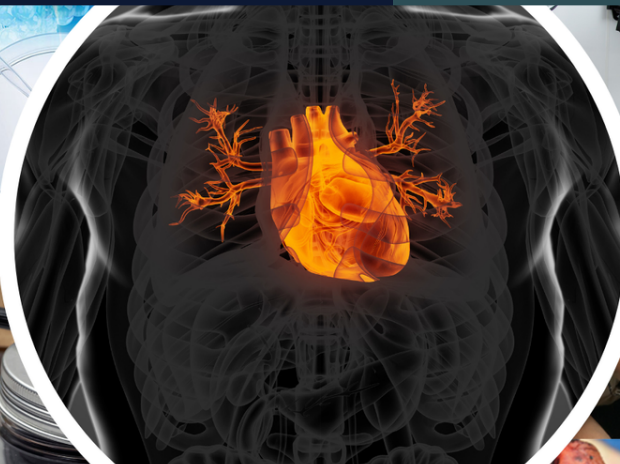


Moved into new office

New Interactive Website



Commitment - Ingenuity



Integrity - Compassion



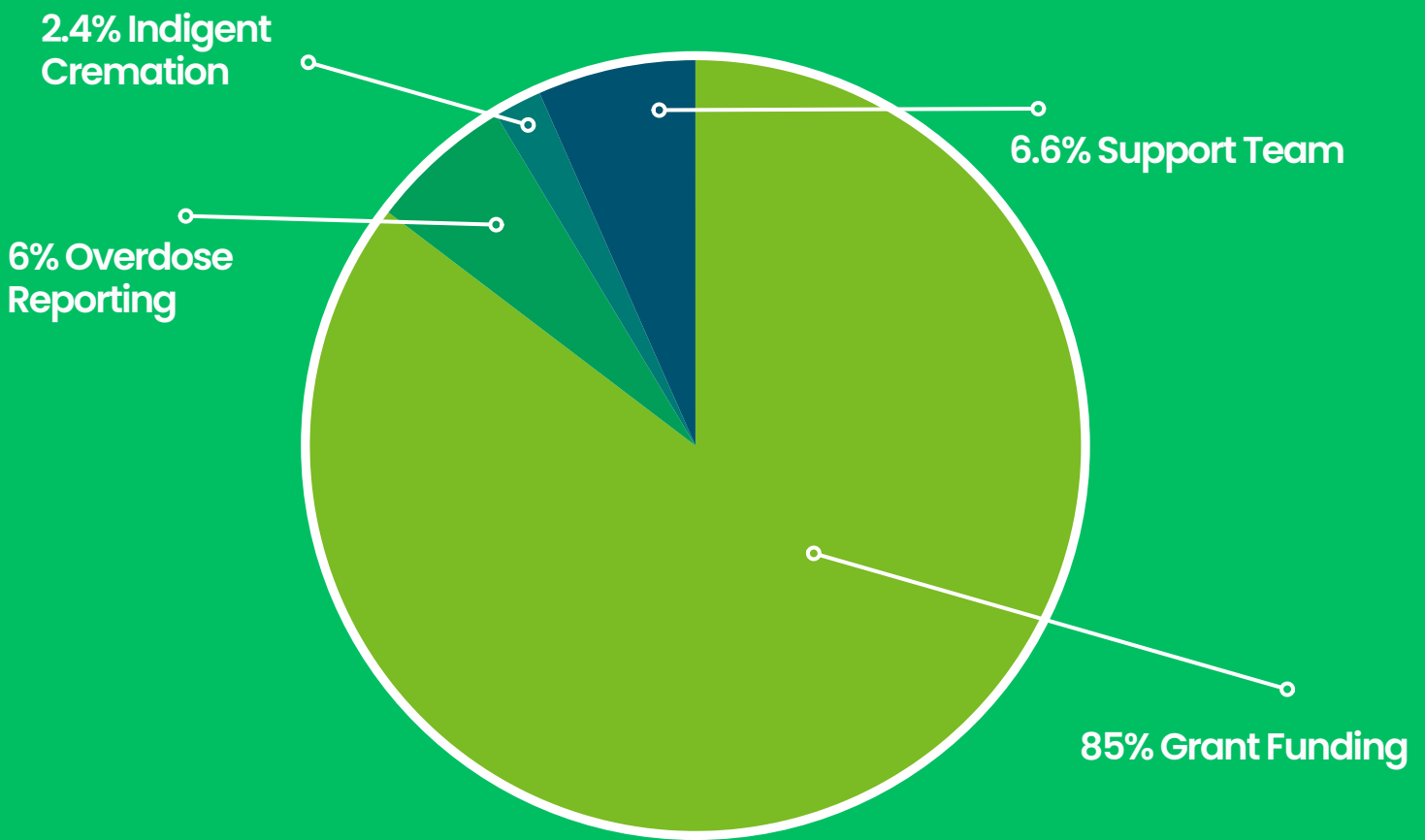


COMMUNITY EVENTS 2023



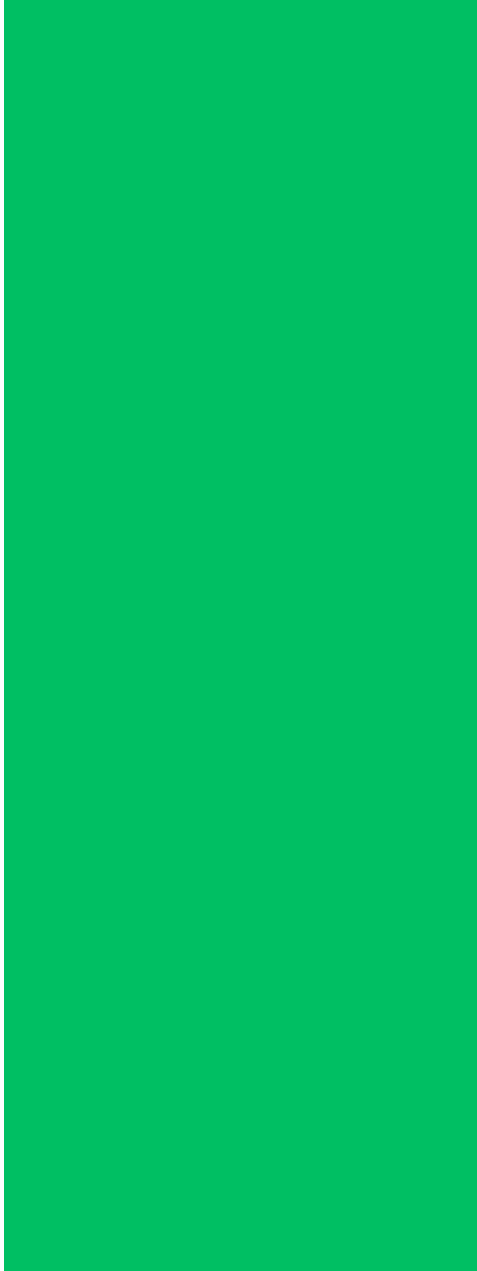
2023 REVENUE

\$56,289.90

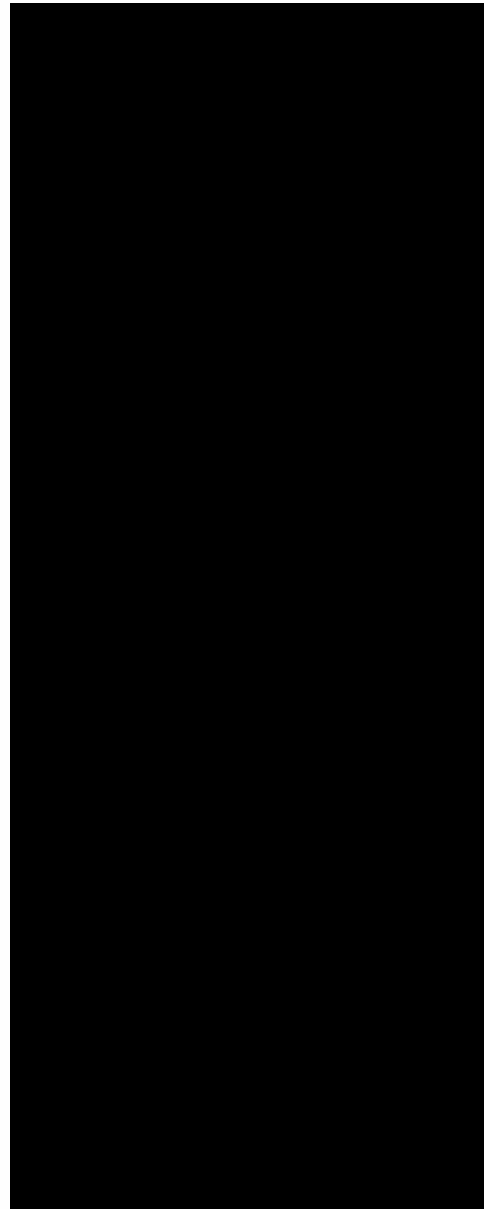


2023 Budget Expense

Ending year 2.55% under Budget



2023 Budget
\$209,564.99



2023 Expenditures
\$204,225.33

Types of Deaths Reportable to the Coroner

Missouri state law mandates that specific types of death be referred to the Coroner for investigation (see list below). These deaths include sudden and unexpected deaths, accidental deaths, and violent deaths. The Coroner has the authority under these Acts to order an autopsy at any time it is deemed necessary to determine or confirm the cause and manner of death.

Deaths Reportable to the Coroner:

- Violent death (e.g., strangulation, gunshot, stabbing, poisoning, etc.)
- Accidental deaths (e.g., falls, drowning, motor vehicle collisions, burns, overdose, etc.)
- Death of a prisoner (e.g., deaths in any county or city jail while imprisoned or in custody).
- Suspicious Circumstances (e.g., Unidentified bodies or events surrounding death)
- Sudden and Unexpected deaths (e.g., all deaths during a surgical procedure, in recovery, anesthesia-related, unexpected natural death, occupational-related deaths)*
- Without medical attendance within 48 hours of death: In cases of chronic illness, the attending physician may sign the death certificate if s/he can be reasonably sure of the cause of death.
- Death of a mother due to an abortion
- Unexpected infant deaths
- All deaths that occur in a Nursing Home
- All Hospice deaths.

The Coroner would generally order an autopsy for any of the reportable deaths listed above.

Crawford County Coroner Cases

Population 24,526

Number of Cases reported to Coroner 268

Number of deaths certified after postmortem examination

Number of Coroner cases with Complete Autopsy 24

Number of Coroner cases with External Examination 86

Number of Coroner cases with Limited Examination 2

Number of deaths after Toxicology and Limited Examination 20

Number of deaths remanded to county of origin 15

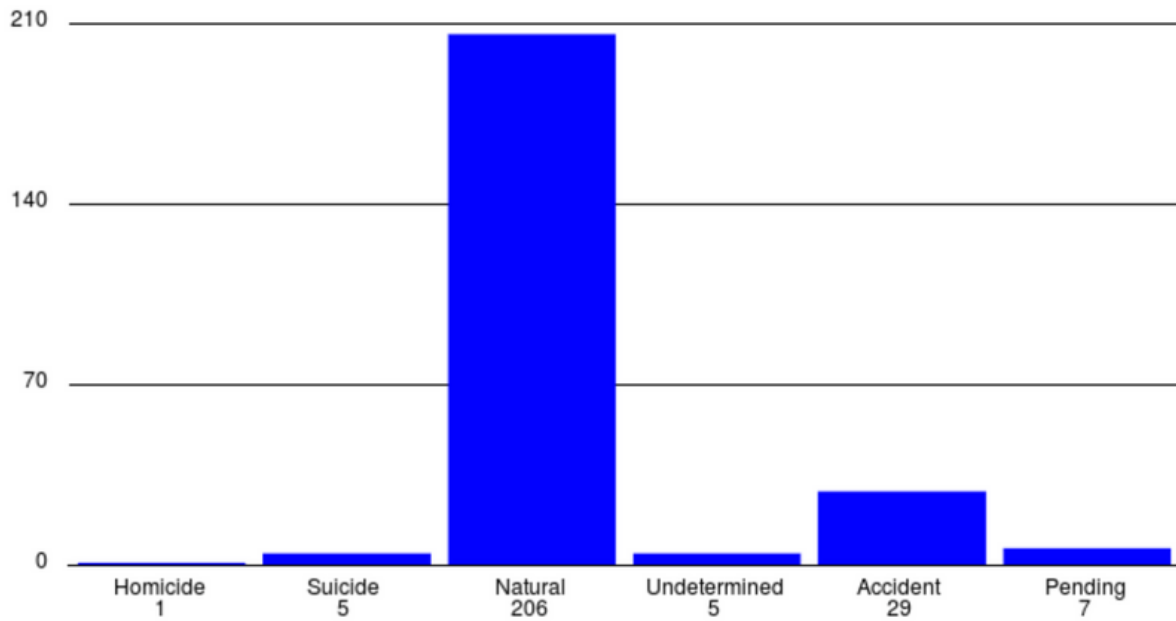
Definitions

Full Autopsy: A complete external and internal examination of a decedent

Limited Examination: An examination focused on a specific organ or region of the body, i.e., heart. The limited examination also includes an external examination.

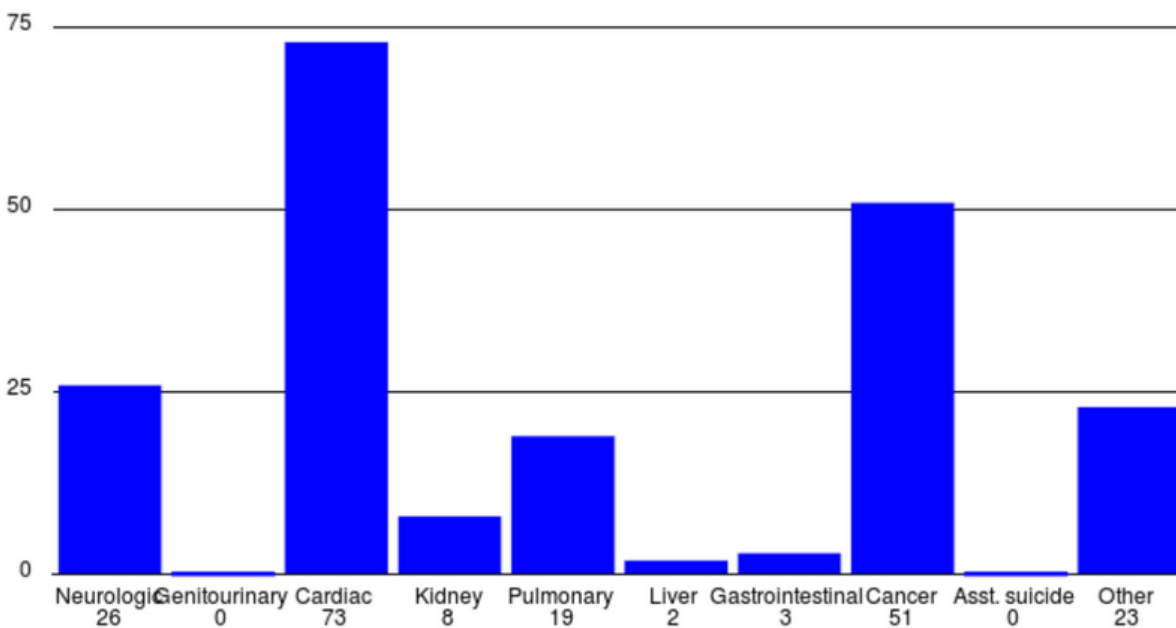
External Examination: An examination of only the exterior of a decedent

Manner of Death assigned after investigation

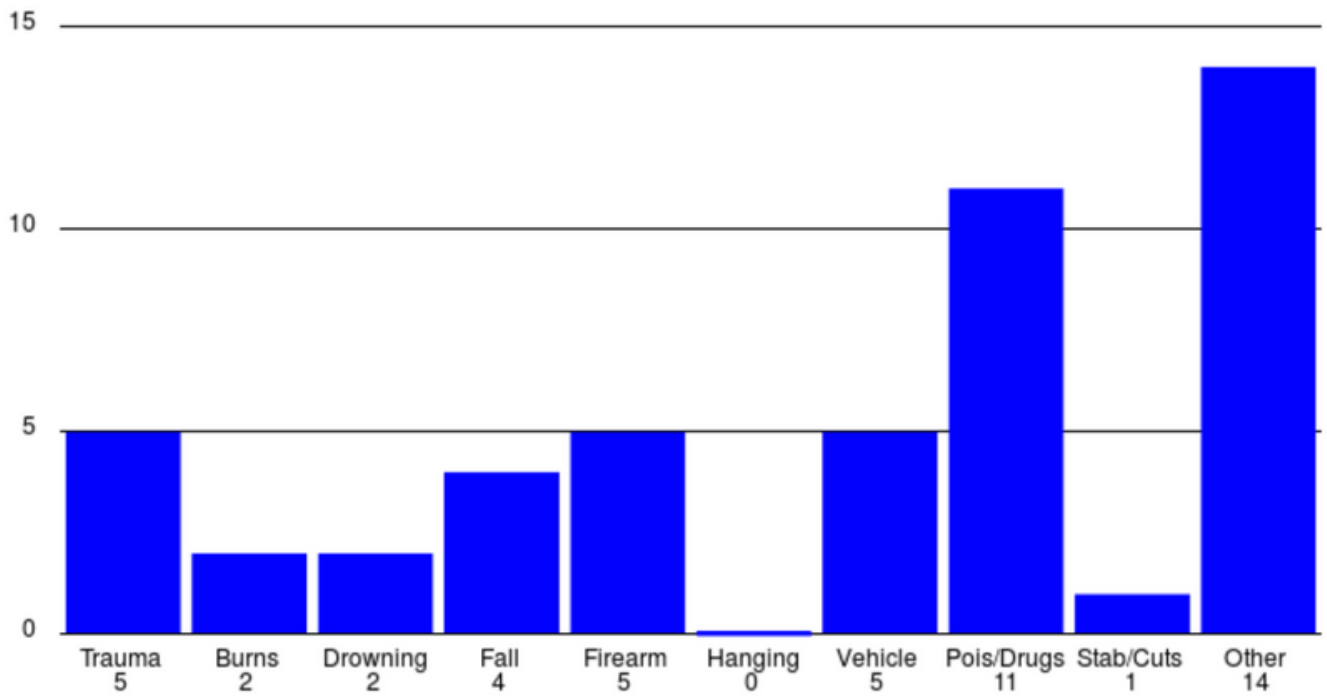


The 15 remanded cases do not show in the Manner of Death chart because the originating County would be assigning that. Pending cases mean we are waiting on testing results or medical records to make our final determination.

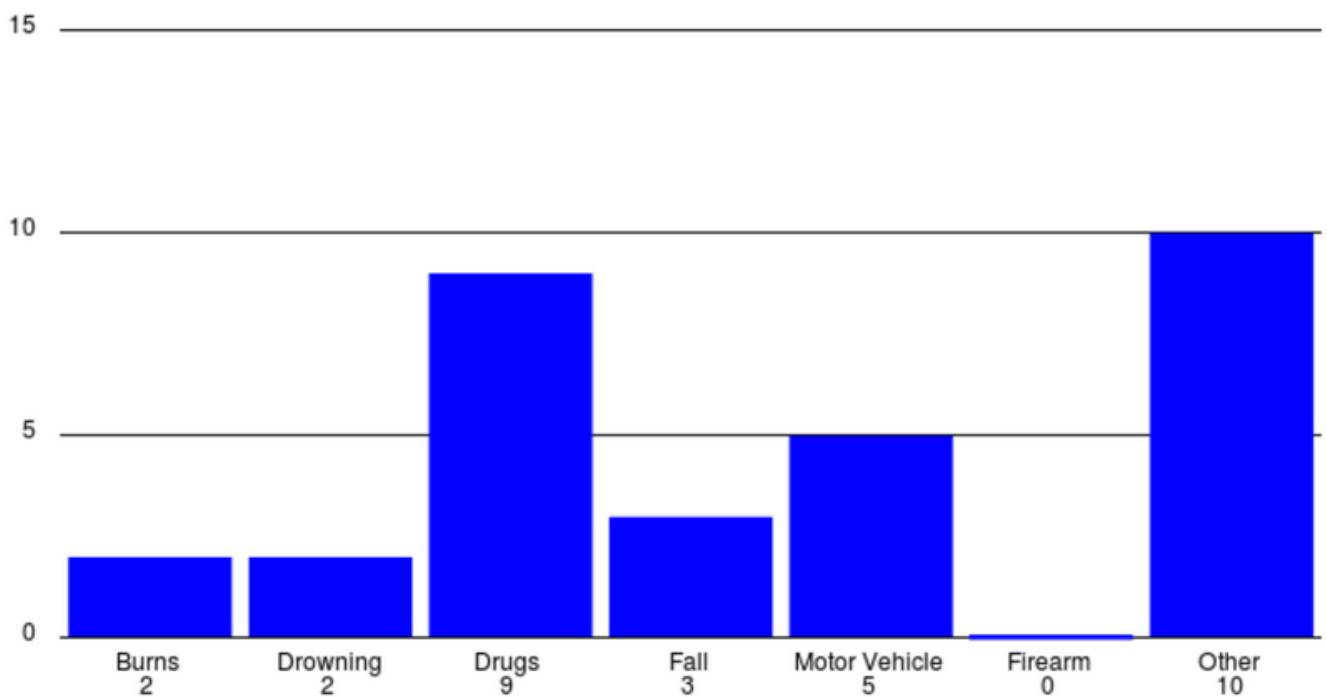
Deaths by Natural Causes



Deaths by Unnatural Causes



Accidental Deaths by Type



Deaths by Age Group

